



# GMT MONTHLY MEMBERSHIP PROGRESS REPORT

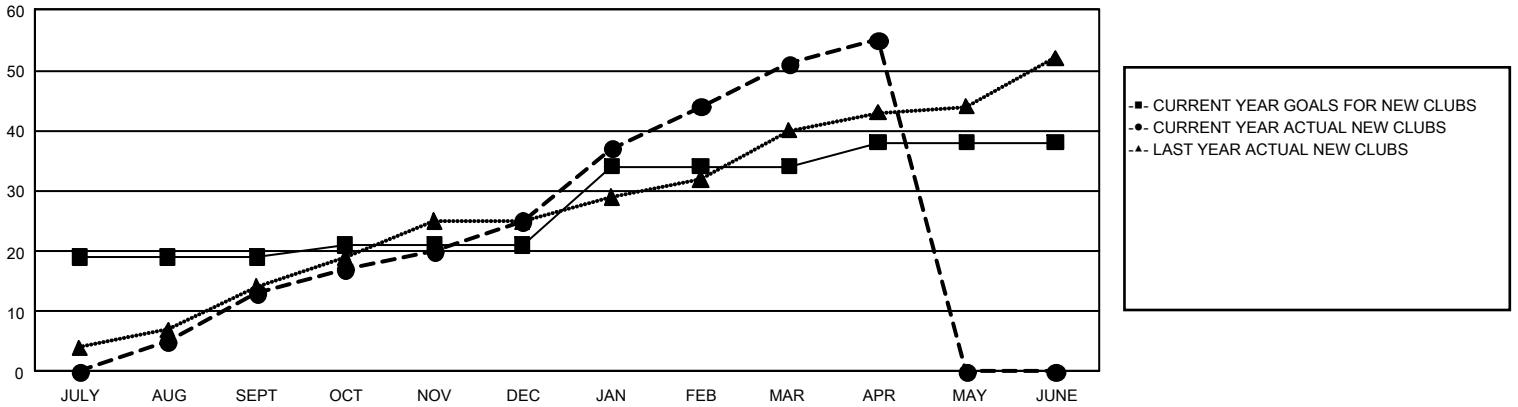
## GAT Constitutional Area 5 - Korea

Results as of: 4/30/2026

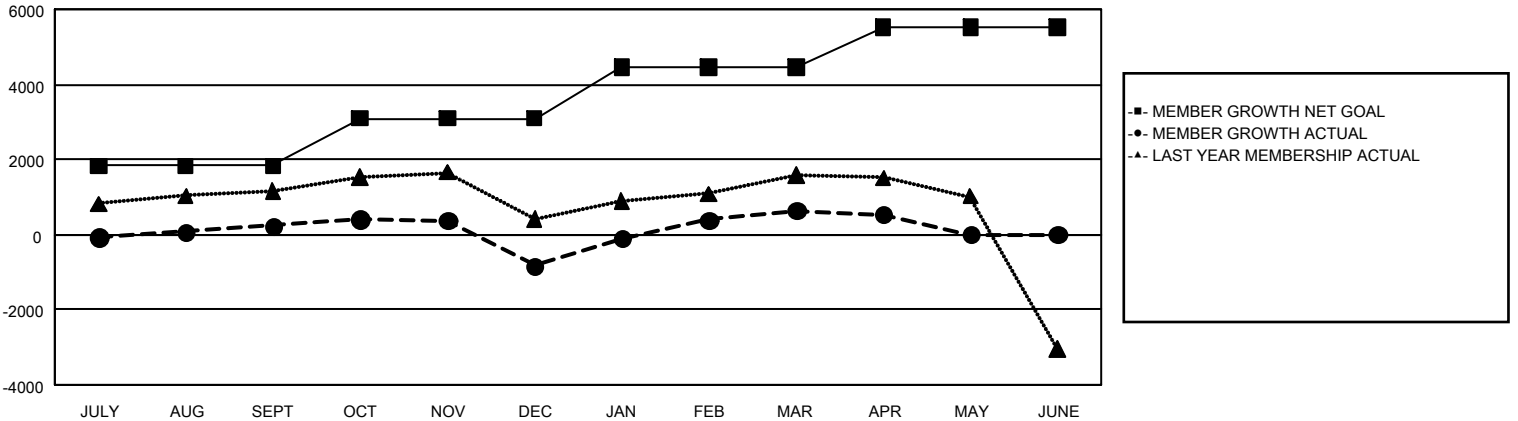
REPORT DOES NOT INCLUDE CLUBS IN UNDISTRICTED AREAS.

Clubs				Members			
RESULTS FOR 2025-2026				RESULTS FOR 2025-2026			
QUARTER	NEW CLUB GOAL	NEW CLUBS	DROPPED CLUBS	QUARTER	MEMBER GROWTH NET GOAL	MEMBER GROWTH ACTUAL	DROPPED MEMBERS ACTUAL (including transfers)
JULY/AUG/SEPT	19	13	7	JULY/AUG/SEPT	1,828	4,150	3,525
OCT/NOV/DEC	2	12	19	OCT/NOV/DEC	1,256	2,080	2,921
JAN/FEB/MAR	13	26	8	JAN/FEB/MAR	1,363	2,974	1,140
APR/MAY/JUNE	4	4	1	APR/MAY/JUNE	1,085	443	507

**GOALS AND ACTUAL NEW CLUBS CUMULATIVE**



**GOALS AND ACTUAL MEMBERS CUMULATIVE**



DROPPED CLUBS: 35	1,503 CLUBS OF 2,063 ADDED 1 OR MORE NEW MEMBERS	<b>GENDER DISTRIBUTION</b>
<b>DROPPED MEMBERS</b>	<a href="#">CLICK HERE FOR CUMULATIVE MEMBERSHIP DATA</a>	MALE 49,714 (72.42%)
DECEASED 187		FEMALE 18,929 (27.57%)
CLUB CANCELLED 399		TOTAL FAMILY UNIT MEMBERS 2,621
OTHER 7,507		FAMILY MEMBERS PAYING HALF DUES 1,492
<b>TOTAL 8,093</b>		